



Quick Start Guide

SERVICE DESCRIPTION

Bytebaq is designed to work on its own or as a supplementary backup to a conventional backup method like tape. The service software will compress and encrypt data prior to transmission and decrypt the data upon return to the originating computer.

All Bytebaq clients can recover their data 24 x 7 over the Internet through the Bytebaq agent. Bytebaq Professional customers also have the option of ordering a total recovery of their data delivered on DVD or encrypted USB disk.

BYTEBAQ AND BYTEBAQ PROFESSIONAL PC EDITION

MINIMUM SYSTEM REQUIREMENTS

512Mb RAM, free disk space equal to the size of the largest single file that will need to be backed up, broadband Internet connection.

OPERATING SYSTEMS

- Windows 2000
- Windows XP
- Windows Vista
- Windows 7

BYTEBAQ PROFESSIONAL SERVER EDITION

MINIMUM SYSTEM REQUIREMENTS

512Mb RAM, free disk space equal to the size of the largest single file that will need to be backed up, broadband Internet connection.

OPERATING SYSTEMS

- Windows Server 2003
- Windows Server 2003 R2
- Windows Server 2008
- Windows Server 2008 R2

INSTALLATION

BYTEBAQ PC EDITION DOWNLOAD LINK

www.bytebaq.com/secure/bytbaqsetup1.0.exe

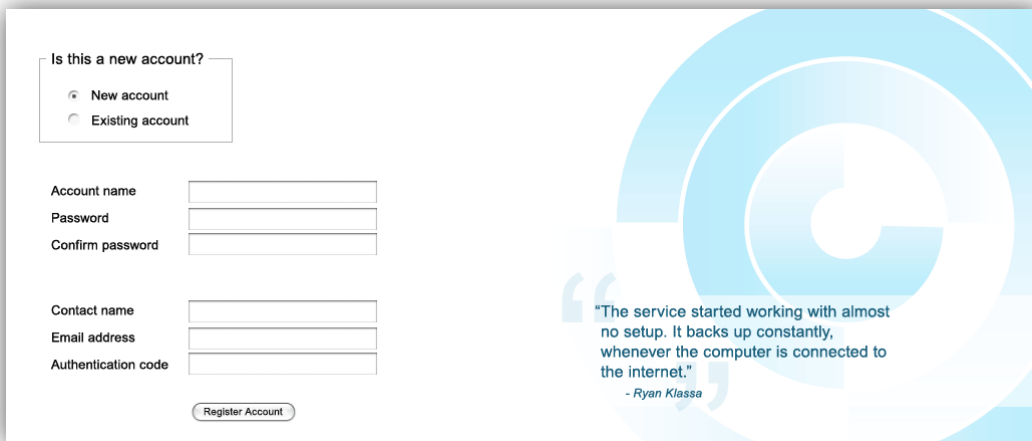
BYTEBAQ PROFESSIONAL PC EDITION DOWNLOAD LINK

www.bytebaq.com/secure/bytebaq-pro_setup.exe

BYTEBAQ PROFESSIONAL SERVER EDITION DOWNLOAD LINK

www.bytebaq.com/secure/bytebaq-pro-server_setup.exe

REGISTRATION



Is this a new account?

New account
 Existing account

Account name
Password
Confirm password

Contact name
Email address
Authentication code

“The service started working with almost no setup. It backs up constantly, whenever the computer is connected to the internet.”
- Ryan Klassa

ACCOUNT DETAILS

If this is a restoration of data onto a new computer select the “Existing Account” radio button.

Account names - Alphanumeric characters only. No spaces or symbols.

Passwords - Alphanumeric characters only. No spaces or symbols.

Email Address - Please use the user’s correct email address in the email field.



Activation Codes - You have been issued 4 activation codes. To make sure that the service works properly you must use the appropriate activation code with the service required.

The Server Edition pairs the activation code with the capacity of the disks on the server being backed up.

The designations are:

- Disks up to 500Gb in size
- Disks between 501Gb and 1000Gb in size
- Disks between 1001Gb and 2000Gb in size

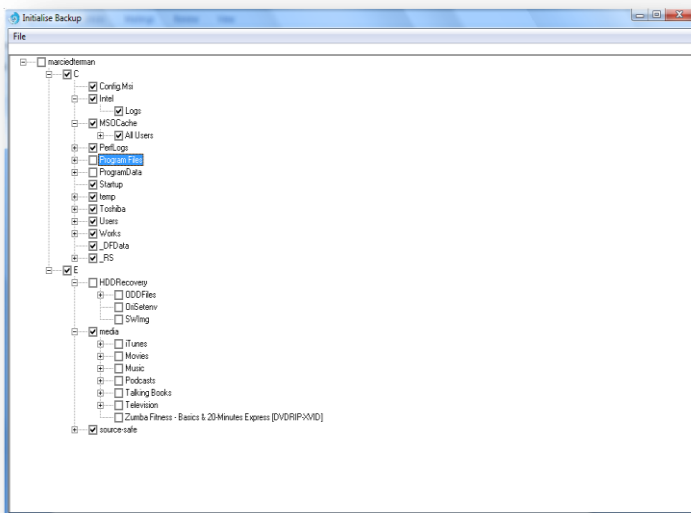
SETTING UP BACKUPS

THREE EASY STEPS

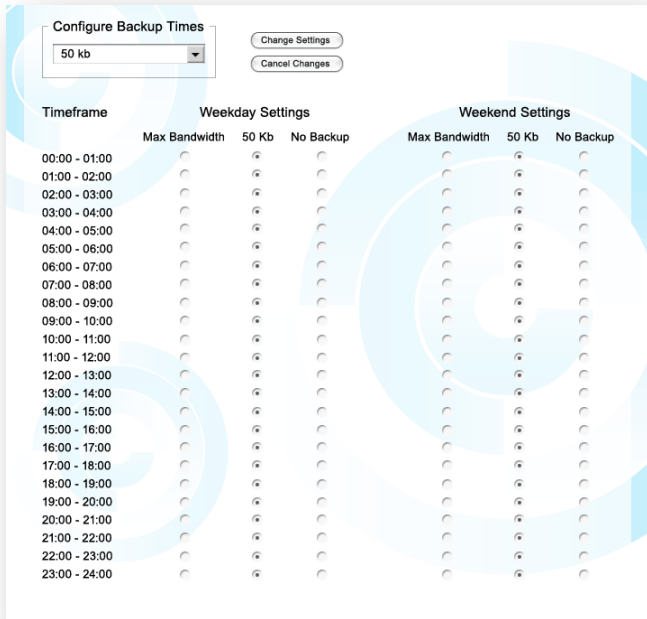
- 1) Create backup sets (Bytebaq Professional only)
- 2) Make backup selections
- 3) Bandwidth Profile adjustments

MULTIPLE BACKUP SETS (BYTEBAQ PROFESSIONAL ONLY)

Bytebaq comes preconfigured with a default backup set. However, you may wish to create multiple backup sets that have their own bandwidth use profiles. To create a new backup set select **“New Backup Set”** from the **Backup Sets** menu. Only letters and numbers without symbols or spaces can be used when naming a backup set. The backup set you have just created is now active for editing. To change the active backup set, select it from the Backup Set menu.




Once you have identified and activated the backup set you wish to modify, select **“Modify Backup Selections”** from the **Options** menu. Check the box to the left of the folder you wish to be backed up to the data centre. You must select **“Save Changes”** from the **File** menu before closing the **“Modify Backup Selections”** window. It is also possible to discard the changes you have made by selecting the **“Cancel Changes”** option from the **File** menu.



Each Backup Set has its own Data Transmission Profile. To change how the **Backup Set** will transmit data select “**Modify Backup Times**” from the **Options** menu. You can select how quickly data will be transmitted by using the radio button for each hour of the day. You can also choose to keep Bytebaq from backing up by selecting the “No Backup” option for a particular time of day. Clicking the “**Change Settings**” button will apply the necessary changes to your **Backup Times** profile.

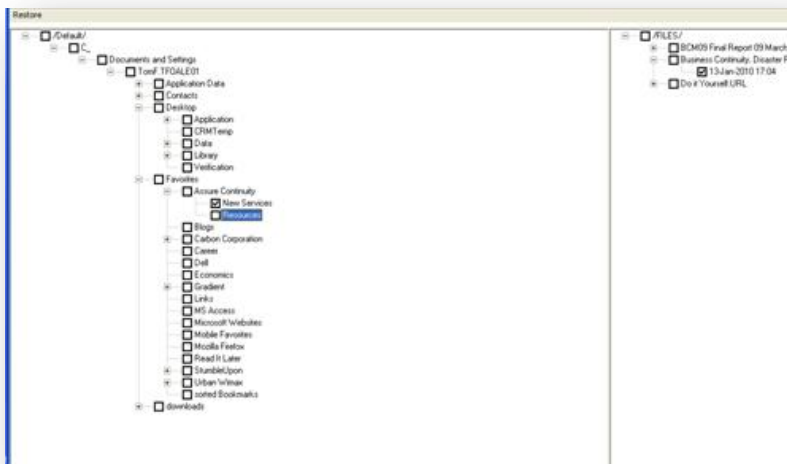
Handy Tip: During the initial data upload put your most critical folders into their own backup set and give that set priority access to bandwidth. This will allow Bytebaq to secure the most important data quickly offsite.

Bytebaq will immediately start backing up data to the data centre. When a backup has completed a  green Bytebaq icon will appear in the system tray.

DATA RECOVERY

Bytebaq PC Edition only has a single backup set to recover from. However if you are a Bytebaq Professional customer you need to have the correct Backup Set selected before you initiate the Restore function.

Select the appropriate **Backup Set** from the **Backup Sets** menu. Then select “**Restore**” from the **File** menu. Expand the Folder list to navigate to the selections to be restored. Bytebaq stores up to 3 versions of files that are changed and resaved. Select the appropriate version prior to initiating the data restoration from the **File** menu. The default setting is for Bytebaq to select the latest version.



You can select all the data in the backup, particular folders and/or individual files to recover. Bytebaq restores data to a folder on the computer’s desktop.

DISK DELIVERY OPTION

Bytebaq Professional clients can order a complete data recovery, delivered on DVDs or encrypted USB disk by contacting the DataFort Office at 0800 45 44 35 Ext. 1. There is a charge for this service.

MENU OPTIONS

FILE MENU

- **Suspend Backup** – Will stop the backup process for a maximum of 2 hours. It is also possible to restart the backup manually by selecting that option from the File menu.
- **Restore** – Opens the Restore Data window.
- **Hide Window** – Leaves the software active but puts the Bytebaq icon in the system tray.

OPTIONS

- **Modify Backup Selections** – Opens the Data Selection window from the active Backup Set.
- **Modify Backup Times** – Opens the Bandwidth Profiling Menu for the active Backup Set.
- **Update account name and password** (This is only used if a mistake has been made while originally setting up the service software).

LOGS

- **Backup Logs** – Places the backup log in the Bytebaq Software window.
- **Restore Logs** – Places the restore log in the Bytebaq Software window.

BACKUP SETS

- **New Backup Set** – Create a new backup set.
- **Delete Backup Set** – Delete a particular backup set.
- **Select Backup Set** – For modification.

SERVICE NOTIFICATIONS

When the Bytebaq Window is closed an icon will be visible in the system tray.



Bytebaq is in the process of backing up.



Bytebaq has recently completed a backup of all data existing on your computer or selected for backup.



There is a problem with backup. Check the Internet connection.



The Suspend Backup Option has been selected.
